

X-550 Series 2X

Wind Deflectable X-550 (2X) Mid-Size Stands
Dual Coil-Flex Springs, Galv. Steel Legs & Mast.

Displays Rigid Signs up to 2.5' and Roll-Up Signs Up to 5' above grade

Extended: 34" W x 84" D x 100" H
Folded: 10" W x 10.5" D x 62.75" H

MODEL NO.	SIGN ATTACHMENTS	WEIGHT
• X-551-KL	• Roll-Up	• 38 lbs.
• X-552-KL	• Rigid	• 40 lbs.
• X-553-KL	• Rigid & Roll-Up	• 41 lbs.



X-600 Series 3X

Wind Deflectable X-600 (3X) Stands with **Dual Coil-Flex Springs**, Aluminum Legs & Mast.

Displays Rigid Signs up to 5' and Roll-Up Signs Up to 7.5' above grade.

Extended: 57" W x 122" D x 129.5" H
Folded: 11.5" W x 8" D x 85.5" H

MODEL NO.	SIGN ATTACHMENTS	WEIGHT
• X-601-KL	• Roll-Up	• 42 lbs
• X-602-KL	• Rigid	• 44 lbs.
• X-603-KL	• Rigid & Roll-Up	• 45 lbs.



X-840 Series 4X

Wind Deflectable X-840 (4X) Stands with **Dual Fiberglass Leaf-Springs**, Aluminum Legs & Mast.

Displays Rigid Signs up to 7' and Roll-Up Signs Up to 10' above grade

Extended: 156" W x 56" D x 85" H
Folded: 11" W x 10.5" D x 80" H

MODEL NO.	SIGN ATTACHMENTS	WEIGHT
• X-601-KL	• Roll-Up	• 42 lbs
• X-602-KL	• Rigid	• 44 lbs.
• X-603-KL	• Rigid & Roll-Up	• 45 lbs.



X-500 Series

Wind Deflectable X-500 Mid-Size Stands
Dual Coil-Flex Springs, Extendable Aluminum Legs & Mast.

Displays Rigid Signs up to 2.5' and Roll-Up Signs Up to 5' above grade

Extended: 39" W x 83" D x 136" H
Folded: 13" W x 8" D x 67" H

MODEL NO.	SIGN ATTACHMENTS	WEIGHT
• X-501-KL-EXT	• Roll-Up	• 34 lbs.
• X-502-KL-EXT	• Rigid	• 36 lbs.
• X-503-KL-EXT	• Rigid & Roll-Up	• 37 lbs.



Eastern Metal
SIGNS & SAFETY

easternmetalsignsandsafety.com

Eastern Metal Signs & Safety
1430 Sullivan Street
Elmira, NY 14901
Phone: 607.734.2295
800.872.SIGN(7446)

Sign Stands

STAND FEATURES

BASES

- Standard base
- Heavy duty, larger base
- Short and extended leg lengths

LEG AND HALF-MAST MATERIALS

- Galvanized steel
- Aluminum
- Short and extended leg lengths

WIND-DEFLECTION SYSTEMS

- Leaf-Spring
- Coil-Spring

3-FLAG HOLDER INCLUDED

LEG-RELEASE SYSTEMS

WIND-DEFLECTION SYSTEMS

SIGN ATTACHMENTS



Kick-Lever



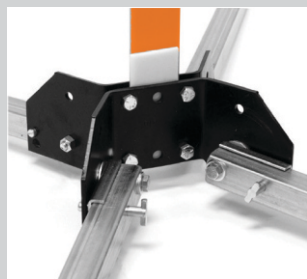
Coil-Spring



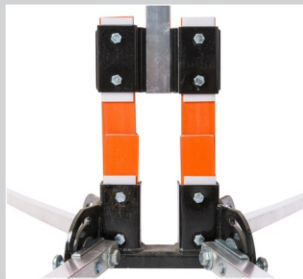
Spin Handle



X-Connect Latch



T-Pin*



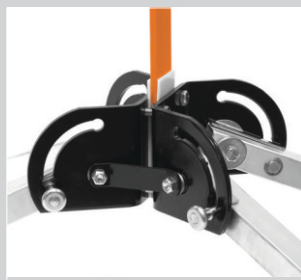
Leaf-Spring



Rigid Brackets



Rigid/Roll-Up



Direct-Drive*
* optional



Quick Release



easternmetalsignsandsafety.com

Eastern Metal Signs & Safety
1430 Sullivan Street
Elmira, NY 14901
Phone: 607.734.2295
800.872.SIGN(7446)

Sign Stand Specifications

X500 Mid Size Stand

X-500 MID SIZE SERIES SIGN STAND (2X)

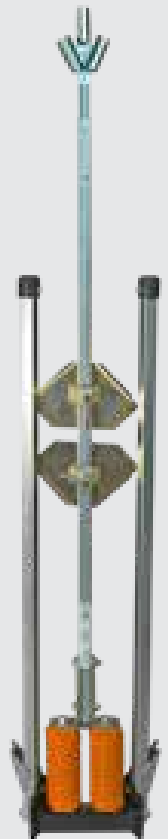


Wind Deflectable Dual Coil-Flex Springs

Extendable Aluminum Legs & Mast.
Displays Rigid Signs up to 2.5' and
Roll-Up Signs Up to 5' above grade

Extended: 39" W x 83" D x 136" H

Folded: 13" W x 8" D x 67" H



- EM Dual vertical steel coil-springs provide optimal wind-deflection and superior lateral stability.
- EM Aluminum legs and full-mast offer maximum resistance to rust and corrosion and are lighter weight and are lighter weight compared to X-550 Series Galvanized Steel legs and full-mast.
- EM Three Sign-Holder options for Rigid and/or Roll-Up Signs offer maximum versatility
- EM All X-500 Stands are available with Kick-Lever leg-release system
- EM Telescoping mast holds Rigid Signs 14"-30" above grade (Roll-Ups to 14"-62" above grade)
- EM Three-position legs adjust for maximum stability, uneven terrain/shoulders, or optimal height

X-500 Series

Model No.	Feature Code:	Leg-Release System (built-in)	Sign Holders included with Stand	Wind Deflection System	Above Grade Clearance (w/48" sign)	Material (stand legs & full-mast)	Weight (without sign or flags)	Dimensions (in inches) open/folded
X-501-EXT	-KL	Kick-Lever	1 Roll-up Holder	Dual Coil-Flex	14" - 72"	Aluminum	38 lbs. (17.24 kg)	58 x 124/7.5 x 10 x 66.5
X-502-EXT	-KL	Kick-Lever	2 Rigid Holders	Dual Coil-Flex	14" - 30"	Aluminum	40 lbs. (18.14 kg)	58 x 124/7.5 x 10 x 66.5
X-503-EXT	-KL	Kick-Lever	2 Rigid/1 Roll-up	Dual Coil-Flex	14" - 30"/72"	Aluminum	41 lbs. (18.6 kg)	58 x 124/7.5 x 10 x 66.5



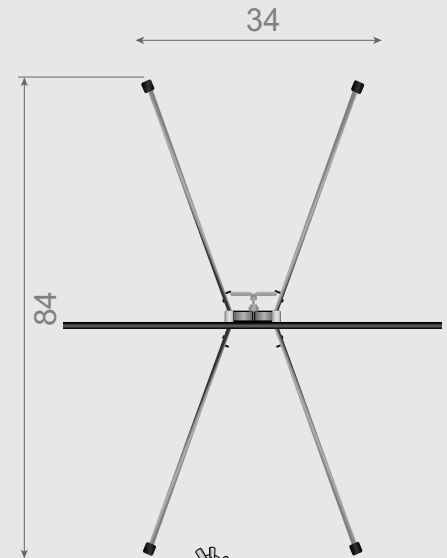
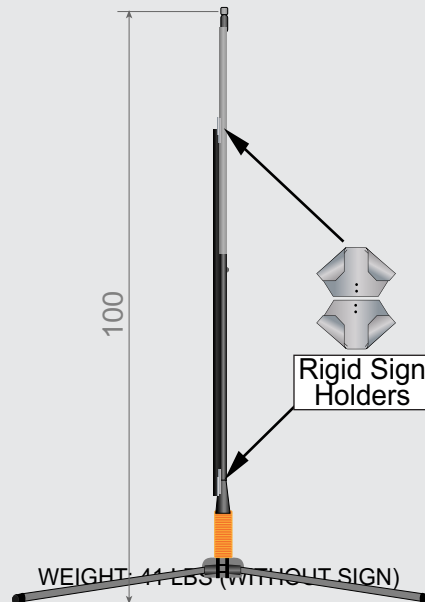
easternmetalsignsandsafety.com

Eastern Metal Signs & Safety
1430 Sullivan Street
Elmira, NY 14901
Phone: 607.734.2295
800.872.SIGN(7446)

Sign Stand Specifications

X550 Mid Size Stand

X-550 MID SIZE SERIES SIGN STAND (2X)



FEATURES

- EM Dual vertical steel coil-springs provide optimal wind deflection and superior lateral stability
- EM Legs and full-mast are galvanized steel for maximum corrosion resistance
- Three sign-holder options for both rigid and roll-up signs
- EM Telescoping mast holds rigid signs up to 30" above grade & roll-up signs up to 62" above grade
- EM Two-position legs adjust for maximum stability, optimal height and uneven terrain
- EM Folds for better storage



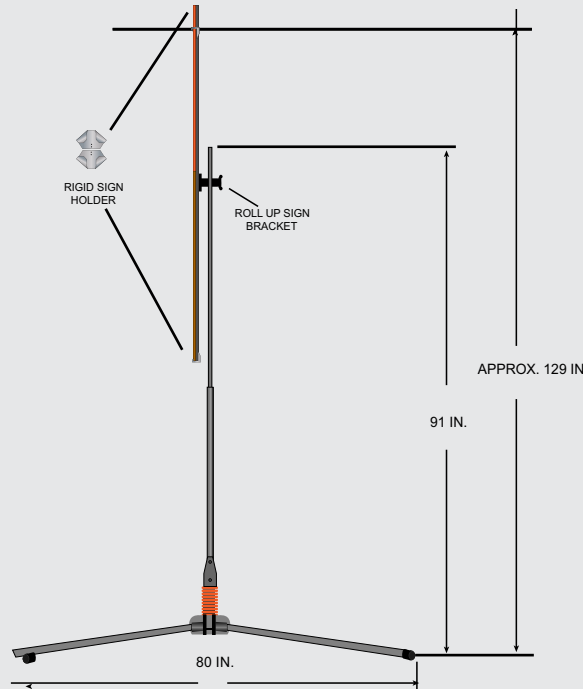
easternmetalsignsandsafety.com

Eastern Metal Signs & Safety
1430 Sullivan Street
Elmira, NY 14901
Phone: 607.734.2295
800.872.SIGN(7446)

X600 Mid Size Stand

X-600 MID SIZE SERIES SIGN STAND (2X)

Factor
Sign Stands



FEATURES

- EM Dual vertical steel coil-springs provide optimal wind-deflection and superior lateral stability
- EM Three sign holder options for both rigid and roll-up signs corrosion-resistant aluminum legs and mast
- EM Telescoping full-mast displays rigid signs (14"-62") above grade & roll-ups (14"-90") above grade
- EM Three position legs adjust for maximum stability , optimal height & on uneven terrain



MODEL #	FEATURE CODE	Leg Release System	Sign Holders Included with Stand	Wind Deflection System	Above Grade Clearance (w 48" Sign)	Material (stand Legs & Full)	Weight without sign or flags.	Dimensions (in Inches open and Folded)
X-841	-DD	Direct-Drive™	1 Roll Up Holder	Leaf Springs	14" - 120"	Aluminum	41 lbs.	57x122x129.5 / 11.75x8x85.5
X-841	-DD	Direct-Drive™	2 Rigid Holdes	Leaf Springs	14" - 84"	Aluminum	44 lbs.	57x122x129.5 / 11.75x8x85.5
X-841	-DD	Direct-Drive™	2 Rigid Holdes / 1 Roll Up	14"-84"-120"	62"-90"	Aluminum	45 lbs.	57x122x129.5 / 11.75x8x85.5

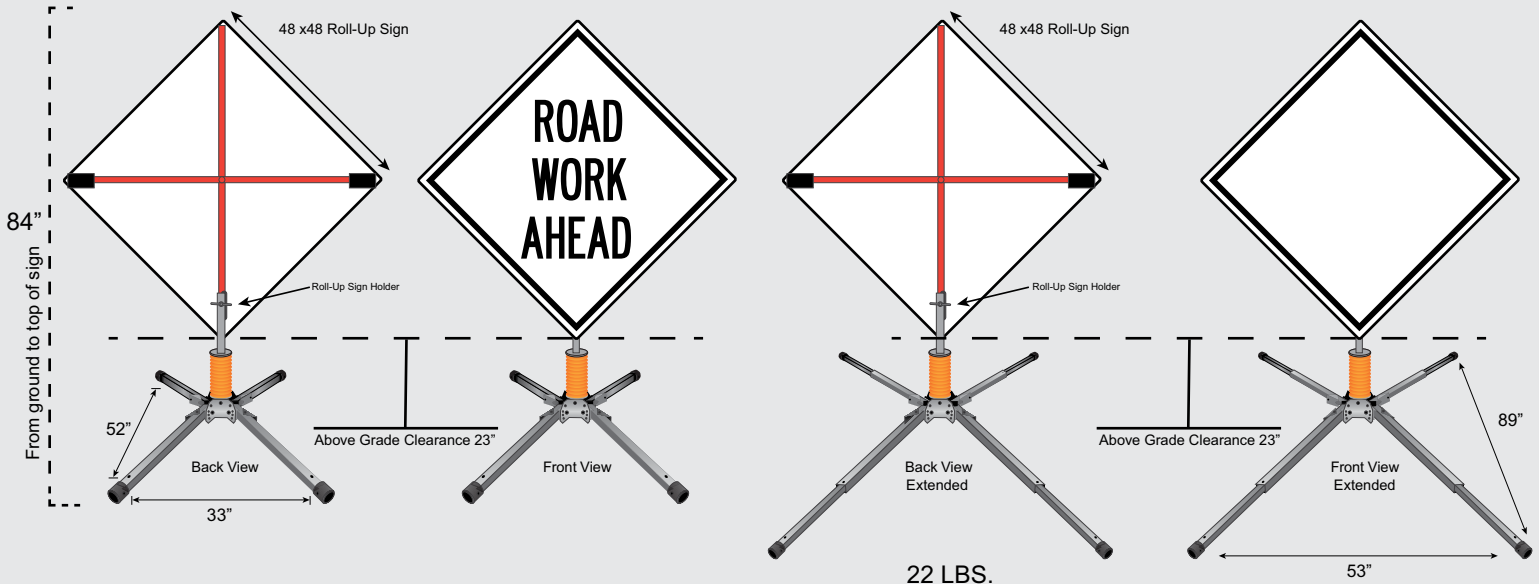


easternmetalsignsandsafety.com

Eastern Metal Signs & Safety
1430 Sullivan Street
Elmira, NY 14901
Phone: 607.734.2295
800.872.SIGN(7446)

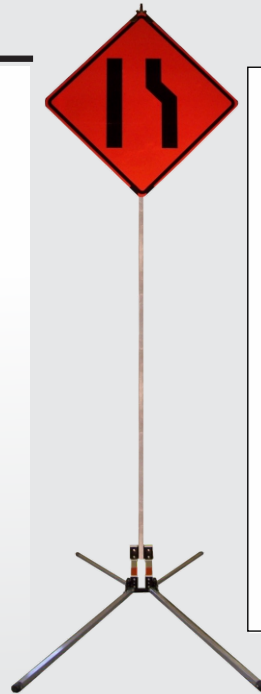
X-800 SIGN STAND (2X)

XFactor
Sign Stands



FEATURES

- EM Designed to display rigid signs 14" - 7' above grade, roll ups 14" - 10' above grade.
- EM Dual fiberglass leaf springs provide industry-best lateral stability and wind deflection
- EM Corrosion-resistant, aluminum {.100"} legs and telescoping mast
- EM Lightweight and stable on even the most uneven terrains and road shoulders
- EM Available with Direct-Drive leg release system and three sign options for rigid or roll-up signs



easternmetalsignsandsafety.com

Eastern Metal Signs & Safety
1430 Sullivan Street
Elmira, NY 14901
Phone: 607.734.2295
800.872.SIGN(7446)

