

# ROAD WAY REFLECTORS DELINEATORS

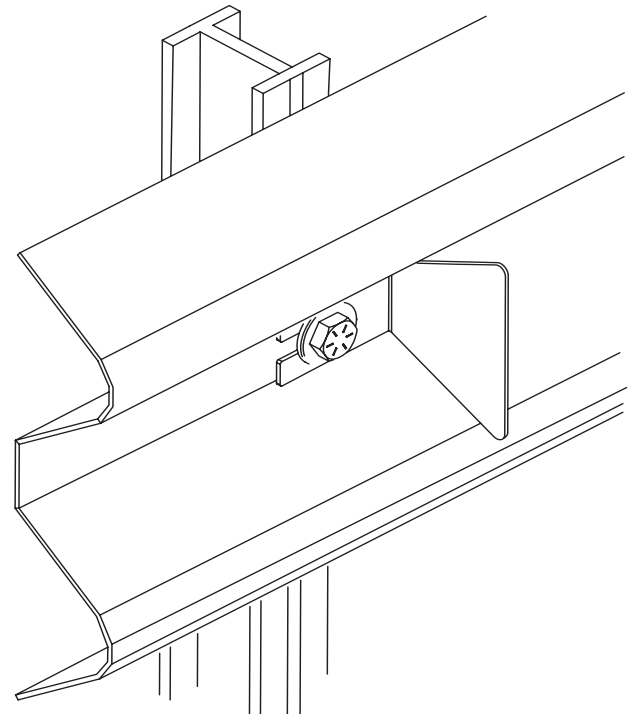
Eastern Metal manufactures delineators in many shapes, sizes and reflective materials to meet various state and local requirements. **We can meet your specifications.**

**STANDARD & CUSTOM  
MANUFACTURED DELINEATORS**

## EASTERN METAL DELINEATORS

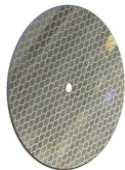
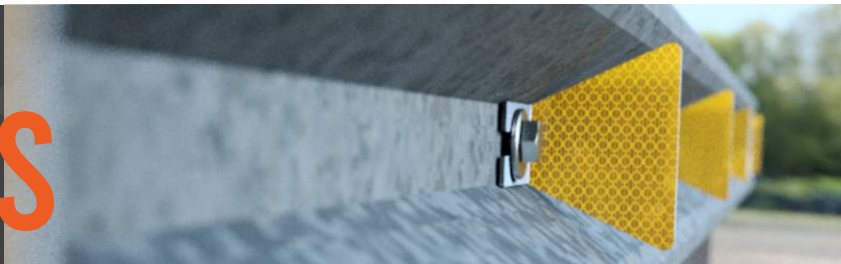
Super Hi-Visibility aluminum delineators  
Feature Reflexite® AP-1000 super hi-visibility  
surfaces.

All Delineators are made with .063"aluminum.  
Standard Colors: White Yellow, Amber, Red

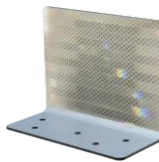


- Standard shapes or custom shapes
- Polycarbonate or aluminum substrate
- Custom colors available.

# EASTERN METAL DELINEATORS



**Delineator Discs**  
**Item Code: D-611-HIP/PC(sf)** -  
 Single-sided reflector  
 Overall size: 3-1/4" diameter  
 1/4" center hole  
 Reflective display: 3-1/4" diameter



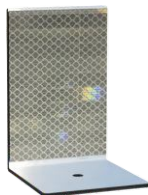
**Barrier-Mount Delineators**  
**Item Code: D-661**-(multiple specs available)  
**Single-sided reflector**  
**Item Code: D-662**-(multiple specs available) -  
**Double-sided reflector**  
 Face: 4-1/2"w x 3-1/2" h  
 Base: 4-1/2"x 2" (with five 1/4" holes)  
 Reflective display: 4-1/4" w x 3" h



**Post-Mount Delineators**  
**Item Code: D-621-HIP/PC(sf)** -  
 Single-sided reflector  
**Item Code: D-622-HIP/PC(df)** -  
 Double-sided reflector  
 Face: 3-1/4"w x 9-1/2" h (with 3/4"x 1-3/4" slot)  
 Reflective display: 3"w x 4-1/4" h



**Barrier-Mount Delineators**  
**Item Code: D-671**-(multiple specs available)  
**Single-sided reflector**  
**Item Code: D-672**-(multiple specs available)  
**Double-sided reflector**  
 Face: 3-1/4"w x 6-7/8" h  
 Base: 3-1/4"x 2-7/8" (with 3/4"x 1-3/4" slot)  
 Reflective display: 3" w x 4-1/4" h



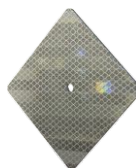
**Barrier-Mount Delineators**  
**Item Code: D-631-HIP/PC(sf)** -  
**Single-sided reflector**  
**Item Code: D-632-HIP/PC(df)** -  
**Double-sided reflector**  
 Face: 3-1/8"w x 4-1/8" h  
 Base: 3-1/8"x 2-1/8" (with two 1/4" holes)  
 Reflective display: 3"w x 3" h



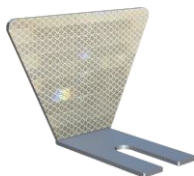
**Barrier-Mount Delineators**  
**Item Code: D-681** - (multiple specs available)  
 Single-sided reflector  
**Item Code: D-682**-(multiple specs available)  
 Double-sided reflector  
 Face: 4-3/4"w x 9-1/2" h  
 Base: 4-3/4"x 2-3/4" (with two 1/4" holes)  
 Reflective display: 4-1/2"w x 7-7/8" h



**Barrier-Mount Delineators**  
**Item Code: D-641-DGW/PC(sf)**  
**Single-sided reflector**  
**Item Code: D-641-HIP/PC(sf)**  
**Single-sided reflector**  
**Item Code: D-642-HIP/PC(df)**  
**Double-sided reflector**  
 Face: 4-3/4"w x 8-1/2" h  
 Base: 4-3/4"x 2-3/4" (with two 1/4" holes)  
 Reflective display: 4-1/2"w x 7-7/8" h



**3"x 3" Aluminum Delineators**  
**Item Code: D-3x3x063-** /AL \_\_\_\_  
 (specify reflective sheeting)  
 Single-sided reflector  
 Face: 3"w x 3" h (with 1/4" center hole)  
 Reflective display: 3"w x 3" h



**Guard-Rail Mount Delineators**  
**Item Code: D-651**-(multiple specs available)  
**Single-sided reflector**  
**Item Code: D-652**-(multiple specs available) -  
 Double-sided reflector  
 Face: 5-1/4"w x 3-1/4" h  
 Face Base: 1-3/4"x 3-1/8"  
 (with 3/4"x 1-3/4" slot)  
 Reflective display: Trapezoidal  
 reflective surfaces  
 (10 square inches minimum reflective per side)



**3"x 9" Aluminum Delineators**  
**Item Code: D-3x9x063-EG/AL**  
 Single-sided reflector  
 Face: 3"w x 9" h (with two 1/4" holes)  
 Reflective display: 3"w x 9" h



[easternmetalsignsandsafety.com](http://easternmetalsignsandsafety.com)

Eastern Metal Signs & Safety  
 1430 Sullivan Street  
 Elmira, NY 14901  
 Phone: 607.734.2295  
 800.872.SIGN(7446)