



Eastern Metal
SIGNS & SAFETY



Traffic Control
Construction Work Zone
Architectural Signage
OSHA & Hazard Signs
Natural Gas Field Safety
Utility and Telephone
Incident Management
School Zone Safety



Fast Shipping
Full Turn-key Work Zones
Knowledgeable Staff
Multiple USA Locations
Rugged Construction
Exacting Standards
Outstanding Customer Service



Sign Stands
Rigid & Roll Up Signs
LED Stop Slow Paddles
Traffic Control Supplies
Reflective Materials
Barricades, Cones,
Delinators, Drums
Channelizers



INTRODUCING

THE APEX LINE OF SIGN STANDS.
THE NEXT GENERATION OF STANDS



INNOVATION, ENGINEERING, AND CRAFTSMANSHIP COME TOGETHER TO BUILD THE APEX LINE OF TEMPORARY TRAFFIC CONTROL DEVICES.

Eastern Metal Signs and Safety, a leading manufacturer of sign holders and stands, has recently introduced a new product line to meet the needs of temporary traffic control. The new stands are lightweight and folds up easily to be stored until needed. It also has a variety of different signs that can be attached to it. This is from a lineage that stretches back almost 70 years. The recent mash testing and rigid crash test standards have shown this to be an innovative, durable product that should serve the needs of those in need of temporary traffic control signage well.

these stands are specially designed for work zones and construction sites. They can hold a variety of vinyl and rigid signs for warning and incident signage. These stands are easy to use and store until needed in a work zone or anyplace that needs incident signage.

These stands survived being field tested in 1000's of work zones all over the United States. On top of that, they have passed rigorous crash testing in a crash test engineering facility.

These are manufactured in our New York manufacturing facility and distributed to warehouses in the USA. This means no one can process orders as fast as we can.

These stands deploy quickly and easily. Our multi position leg system allows for flexibility even on the most uneven terrain. With additional attention to detail, all of the Apex stands feature anti-skid foot pads giving you that extra peace of mind on-site.

The Apex line has a configuration to fit most any need in its stock configuration. Other configurations are available upon request.

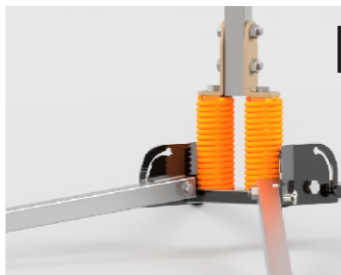
OVER 70 YEARS
IN THE INDUSTRY
PRODUCTS
MANUFACTURED
IN THE USA



DIRECT DRIVE RELIABILITY

SPRING PIN AND HOLE LOCKING SYSTEM

RUGGED CONSTRUCTION IN THE AMERICAN
MADE DIRECT DRIVE BASE, THAT HAS
PASSED FHWA CRASH TEST STANDARDS.



Eastern Metal
SIGNS & SAFETY

Eastern Metal Signs & Safety
1430 Sullivan Street Elmira, NY 14901
Phone: 607.734.2295



EASTERNMETALSIGNSANDSAFETY.COM

LEG AND HALF-MAST MATERIALS

- Galvanized Steel
- Short And Extended Leg Lengths

WIND-DEFLECTION SYSTEMS

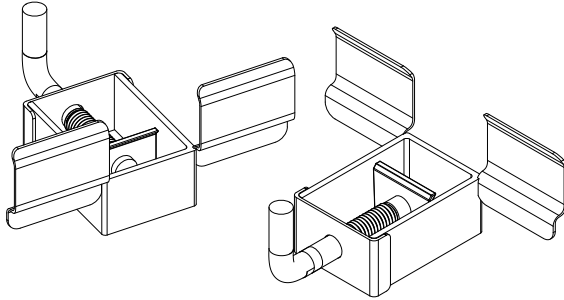
- Leaf-Spring
- Coil-Spring

BASES

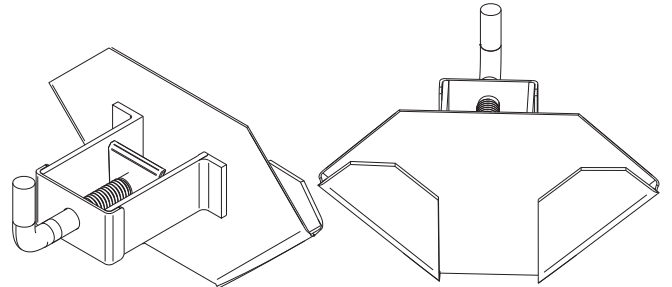
- Standard Base
- Heavy Duty, Larger Base
- Short And Extended Leg Lengths

SIGN HOLDER TYPES

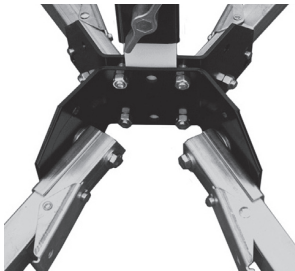
ROLL-UP HOLDER



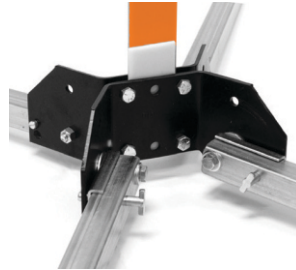
RIGID HOLDER



LEG-RELEASE



Kick-Lever



T-Pin*

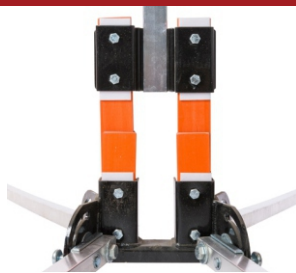


Direct-Drive*

WIND DEFLECTION



Coil-Spring



Leaf-Spring



No Deflection

SIGN ATTACHMENTS



Spin Handle



Rigid Brackets



Quick Release



X-Connect Latch



Rigid/Roll-Up



APEX

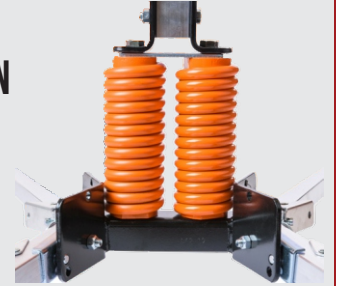
RIGID MAST

COMPARABLE WITH
PREVIOUS MODEL
C-101
C-102

APEX DUAL RECOIL

**2 SPRING
WIND DEFLECTION**

COMPARABLE WITH
PREVIOUS MODEL
X-550 SERIES
X-553



APEX FLEX

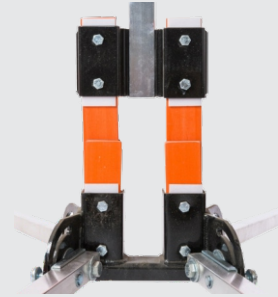
**LEAF SPRING
WIND DEFLECTION**

COMPARABLE WITH
PREVIOUS MODEL
C-202
C-902

APEX SUMMIT

**DOUBLE LEAF SPRING
WIND DEFLECTION**

COMPARABLE WITH
PREVIOUS MODEL
X-840



APEX RECOIL

**SINGLE SPRING
WIND DEFLECTION**

COMPARABLE WITH
PREVIOUS MODEL
C-301
C-801



APEX TRIPOD

**ECONOMICAL
FIXED TRIPOD LEGS**

COMPARABLE WITH
PREVIOUS MODEL
E-350



APEX DUAL RECOIL MAX

**2 COIL WIND
DEFLECTION**

COMPARABLE WITH
PREVIOUS MODEL
X-600



MODEL	COMPARE TO PREVIOUS VERSION
APEX TRI	E-350
APEX	C-101/102
APEX FLEX	C-202/902
APEX RECOIL	C-301/801
APEX DUAL RECOIL	X-550 SERIES
APEX DUAL RECOIL MAX	X-600 SERIES
APEX SUMMIT	X-840 SERIES

**APEX
COMPACT**



THE NEXT GENERATION OF SIGN STANDS

- MASH TESTED
- MADE IN THE USA
- DIRECT DRIVE DURABILITY
- FIELD TESTED & PROVEN RELIABLE IN 1000S OF WORK ZONES
- RIGID CENTER MAST

FEATURES

Apex stands are rugged and reliable, deploy quickly, fold small, and are economical.

Apex legs offer maximum resistance to rust and corrosion.

The 2-position, 2-piece telescoping legs adjust for maximum stability on uneven terrain and road shoulders. Leg lengths options available see chart below.

Apex Series Stands come standard with direct drive and kick lever are available upon request.

Roll-Up Signs attach to the Apex Series Stands with a Spin-Handle, or Latch Bracket available upon request.

Apex Series is Mash Compliant 2016 with roll-ups.



APEX COMPACT TECHNICAL DATA

MASH TESTED

COMPACT

MODEL	COMPARABLE W/ PREVIOUS MODEL	WIND DEFLECTION SYSTEM	MATERIAL	LEG LENGTH *1	HEIGHT ABOVE ROAD W/ 48" SIGN	LEG-RELEASE SYSTEM (BUILT-IN)	SIGN HOLDERS	SIGN ATTACHMENT	WEIGHT (W/OUT SIGN OR FLAGS)	OPEN SIZE W" X L" X H"	STORAGE SIZE W" X L" X H"
APEX	C-101 / 102	NA	GALV. STEEL	SHORT	13"	DIRECT DRIVE	NA	SPIN HANDLE	20 LBS.	41 X 68 X 79	9 X 9 X 24
APEX-LT	C-101 / 102	NA	GAL. STEEL	SHORT	13"	DIRECT DRIVE	NA	LATCH-STYLE	20 LBS.	41 X 68 X 79	9 X 9 X 24
APEX-ALS	C-601	NA	ALUMINUM	SHORT	13"	DIRECT DRIVE	NA	SPIN HANDLE	16 LBS.	41 X 68 X 79	9 X 9 X 24
APEX-ALS-LT	C-601	NA	ALUMINUM	SHORT	13"	DIRECT DRIVE	NA	LATCH-STYLE	16 LBS.	41 X 68 X 79	9 X 9 X 24
APEX-AL-LT	C-601	NA	ALUMINUM	LONG	16.5"	DIRECT DRIVE	NA	LATCH-STYLE	19.25LBS.	41 X 68 X 79	9 X 9 X 24
APEX-AL-L	C-601	NA	ALUMINUM	LONG	16.5"	DIRECT DRIVE	NA	SPIN HANDLE	19.25 LBS.	41 X 68 X 79	9 X 9 X 24

**APEX
FLEX**



THE NEXT GENERATION OF SIGN STANDS

- MASH TESTED
- MADE IN THE USA
- DIRECT DRIVE DURABILITY
- FIELD TESTED & PROVEN RELIABLE IN 1000'S OF WORK ZONES
- LEAF SPRING WIND DEFLECTION

FEATURES

Adjustable fiberglass leaf-spring provides optimal wind-deflection in all conditions and will not fatigue or break during normal use.

Galvanized aluminum legs offer maximum resistance to rust and corrosion. The 3-position, 2-piece telescoping legs adjust for maximum stability on uneven terrain and road shoulders.

Legs available in Short (38" extended) -or- Long (50" extended).

Apex Flex Stands these come standard with direct drive, kick lever is available upon request.

Roll-Up Signs attach to the Apex Flex Series Stands with a Spin-Handle which are standard to the unit. Latch brackets are also available by request.

Apex Flex Series Stands are Mash 2016 compliant and accepted for use with All Roll-Up Signs.



APEX FLEX TECHNICAL DATA

MASH TESTED

COMPACT

MODEL	COMPARABLE WITH PREVIOUS MODEL	WIND DEFLECTION SYSTEM	MATERIAL (STAND LEGS & FULL-MAST)	LEG LENGTH *1	HEIGHT ABOVE ROAD W/48" SIGN	LEG-RELEASE SYSTEM (BUILT-IN)	SIGN HOLDERS	SIGN ATTACHMENT	WEIGHT (WITHOUT SIGN OR FLAGS)	OPEN SIZE W" X L" X H"	STORAGE SIZE W" X L" X H"
APEX FLEX	C-202	LEAF-SPRING	GALV. STEEL	SHORT	23"	DIRECT DRIVE	NA	SPIN-HANDLE	23 LBS.	43X68X89	8 X 9 X 24
APEX FLEX AL	C-902	LEAF-SPRING	ALUMINUM	LONG	23"	DIRECT DRIVE	NA	SPIN-HANDLE	22.5 LBS.	43X68X89	8 X 9 X 24

**APEX
COMPACT**



THE NEXT GENERATION OF SIGN STANDS

- MASH TESTED
- MADE IN THE USA
- DIRECT DRIVE DURABILITY
- FIELD TESTED & PROVEN RELIABLE IN 1000'S OF WORK ZONES
- RIGID CENTER MAST

FEATURES

Apex stands are rugged and reliable, deploy quickly, fold small, and are economical.

Apex legs offer maximum resistance to rust and corrosion.

The 2-position, 2-piece telescoping legs adjust for maximum stability on uneven terrain and road shoulders. Leg lengths options available see chart below.

Apex Series Stands come standard with direct drive and kick lever are available upon request.

Roll-Up Signs attach to the Apex Series Stands with a Spin-Handle, or Latch Bracket available upon request.

Apex Series is Mash Compliant 2016 with roll-ups.



APEX COMPACT TECHNICAL DATA

MASH TESTED

COMPACT

MODEL	COMPARABLE WITH PREVIOUS MODEL	WIND DEFLECTION SYSTEM	MATERIAL	LEG LENGTH *1	HEIGHT ABOVE ROAD W/48" SIGN	LEG-RELEASE SYSTEM (BUILT-IN)	SIGN HOLDERS	SIGN ATTACHMENT	WEIGHT (WITHOUT SIGN OR FLAGS)	OPEN SIZE W" X L" X H"	STORAGE SIZE W" X L" X H"
APEX	C-101 / 102	INFLEXIBLE	GALV. STEEL	SHORT	13"	DIRECT DRIVE	NA	SPIN HANDLE	20 LBS.	41 X 68 X 79	9 X 9 X 24
APEX-LT	C-101 / 102	INFLEXIBLE	GAL. STEEL	SHORT	13"	DIRECT DRIVE	NA	LATCH-STYLE	20 LBS.	41 X 68 X 79	9 X 9 X 24
APEX-ALS	C-601	INFLEXIBLE	ALUMINUM	SHORT	13"	DIRECT DRIVE	NA	SPIN HANDLE	20 LBS.	41 X 68 X 79	9 X 9 X 24
APEX-ALS-LT	C-601	INFLEXIBLE	ALUMINUM	SHORT	13"	DIRECT DRIVE	NA	LATCH-STYLE	20 LBS.	41 X 68 X 79	9 X 9 X 24
APEX-AL-LT	C-601	INFLEXIBLE	ALUMINUM	LONG	13"	DIRECT DRIVE	NA	LATCH-STYLE	20 LBS.	41 X 68 X 79	9 X 9 X 24
APEX-AL-L	C-601	INFLEXIBLE	ALUMINUM	LONG	16.5"	DIRECT DRIVE	NA	SPIN HANDLE	20 LBS.	41 X 68 X 79	9 X 9 X 24

APEX RECOIL



THE NEXT GENERATION OF SIGN STANDS

- MASH TESTED
- MADE IN THE USA
- DIRECT DRIVE DURABILITY
- FIELD TESTED & PROVEN RELIABLE IN 1000'S OF WORK ZONES



FEATURES

APEX Recoil Stands available with a standard base and Coil-Flex Single Spring which provides wind-deflection and lateral stability in all conditions.

The 3-position, 2-piece telescoping legs adjust for maximum stability on uneven terrain and road shoulders. Legs available in Short (38" extended) -or- Long (50" extended).

Roll-Up Signs attach to the Stands with universal Spin-Handle™.

Apex Recoil Series Stands are MASH 2016 Accepted for use with all Roll-Up Signs.



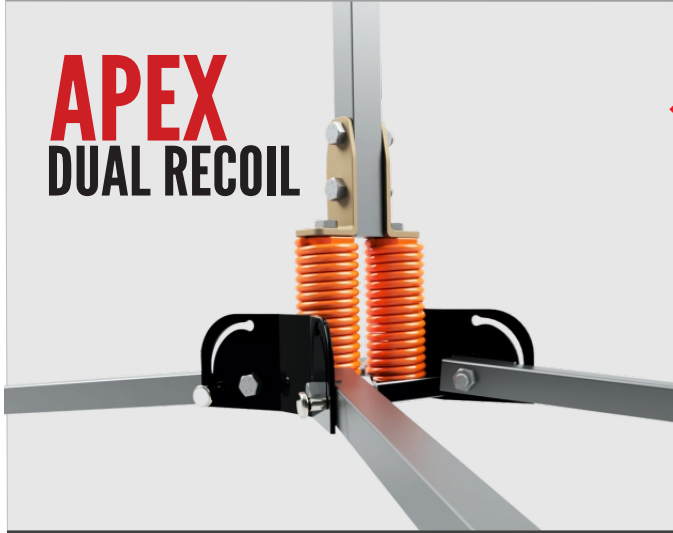
APEX RECOIL TECHNICAL DATA

MASH TESTED

COMPACT

MODEL	COMPARABLE WITH PREVIOUS MODEL	WIND DEFLECTION SYSTEM	MATERIAL (STAND LEGS & FULL-MAST)	LEG LENGTH	HEIGHT ABOVE ROAD W/48" SIGN	LEG-RELEASE SYSTEM (BUILT-IN)	SIGN HOLDERS	SIGN ATTACHMENT	WEIGHT (WITHOUT SIGN OR FLAGS)	OPEN SIZE W" X L" X H"	STORAGE SIZE W" X L" X H"
RECOIL	C-801	COIL-FLEX	ALUMINUM	LONG	14"	DIRECT DRIVE	NA	SPIN-HANDLE	22 LBS.	53X 89 X 80	8 X 9 X 24
RECOIL-LT	C-301	COIL-FLEX	ALUMINUM	LONG	14"	DIRECT DRIVE	NA	LATCH BRACKET	22 LBS.	53X 89 X 80	8 X 9 X 24
RECOIL-ST	C-301	COIL-FLEX	GALV. STEEL	SHORT	14"	DIRECT DRIVE	NA	SPIN-HANDLE	22 LBS.	53X 89 X 80	8 X 9 X 24
RECOIL-STLT	C-301	COIL-FLEX	GALV. STEEL	SHORT	14"	DIRECT DRIVE	NA	LATCH BRACKET	22 LBS.	53X 89 X 80	8 X 9 X 24

**APEX
DUAL RECOIL**



THE NEXT GENERATION OF SIGN STANDS

- MASH TESTED
- MADE IN THE USA
- DIRECT DRIVE DURABILITY
- FIELD TESTED & PROVEN RELIABLE IN 1000'S OF WORK ZONES
- DUAL LEAF SPRING WIND DEFLECTION

FEATURES

Dual Vertical steel coil-springs provide optimal wind-deflection and superior lateral stability.

Three Sign-Holder options for Rigid and/or Roll-Up Signs offer maximum versatility

Standard Direct-Drive leg release system available with kick lever Legs and mast are corrosion-resistant steel.

Telescoping full-mast displays Rigid Signs 18"- 60" mash approved at 18 inches above grade (Roll-Ups 14"- 84" above grade).

3 position legs adjust for maximum stability on uneven terrain/shoulders or optimal height.

Dual Recoil Series displays ANY size or shape rigid (hard) sign, or Roll-Up Sign.

Dual Recoil Series Features Break-A-Way Safety-Mast

MASH Tested Approved Substrates: Aluminum, Roll-ups, Aluminum Composite Material.

3 Flag holder.



APEX DUAL RECOIL TECHNICAL DATA

MASH TESTED

MID LEVEL

MODEL	COMPARABLE WITH PREVIOUS MODEL	WIND DEFLECTION SYSTEM	MATERIAL (STAND LEGS & FULL-MAST)	LEG LENGTH	HEIGHT ABOVE ROAD W/48" SIGN	LEG-RELEASE SYSTEM (BUILT-IN)	SIGN HOLDERS	SIGN ATTACHMENT	WEIGHT (WITHOUT SIGN OR FLAGS)	OPEN SIZE W" X L" X H"	STORAGE SIZE W" X L" X H"
DUAL RECOIL	X-551	DUAL COIL-FLEX	GALV. STEEL	LONG	62"	DIRECT DRIVE	1 ROLL-UP	NA	41LBS.	34X84X84	12 X 8 X 63
DUAL RECOIL	X-552	DUAL COIL-FLEX	GALV. STEEL	LONG	18"	DIRECT DRIVE	2 RIGID	NA	41 LBS.	34X84X84	12 X 8 X 63
DUAL RECOIL	X-553	DUAL COIL-FLEX	GALV. STEEL	LONG	18" - 62"	DIRECT DRIVE	2 RIGID/1 ROLL-UP	NA	41 LBS.	34X84X84	12 X 8 X 63

**APEX
DUAL RECOIL
MAX**



THE NEXT GENERATION OF SIGN STANDS

- MASH TESTED
- MADE IN THE USA
- DIRECT DRIVE DURABILITY
- FIELD TESTED & PROVEN RELIABLE IN 1000'S OF WORK ZONES
- DUAL COIL SPRING WIND DEFLECTION



FEATURES

Dual vertical steel coil-springs provide optimal wind-deflection and superior lateral stability.

Three sign-holder options for rigid and/or roll-up signs offer maximum versatility

Standard direct-drive leg release system, available with kick lever upon request.

Legs and mast are corrosion-resistant aluminum.

Telescoping full-mast displays rigid signs 14" - 60" above grade (roll-ups 14" - 84" above grade)

3 position legs adjust for maximum stability on uneven terrain/shoulders for optimal height.

Dual recoil max series displays any size or shape rigid (hard) sign, or roll-up sign.

Dual recoil max series features break-a-way safety-mast. MASH tested approved substrates: aluminum, roll-ups, aluminum composite material.

Comes standard with 3 flag holder.



APEX DUAL RECOIL MAX TECHNICAL DATA



MID LEVEL

MODEL	COMPARABLE WITH PREVIOUS MODEL	WIND DEFLECTION SYSTEM	MATERIAL (STAND LEGS & FULL-MAST)	LEG LENGTH	HEIGHT ABOVE ROAD W/ 48" SIGN	LEG-RELEASE SYSTEM (BUILT-IN)	SIGN HOLDERS	SIGN ATTACHMENT	WEIGHT (WITHOUT SIGN OR FLAGS)	OPEN SIZE W" X L" X H"	STORAGE SIZE W" X L" X H"
DUAL RECOIL MAX-RU	X-601	COIL-SPRINGS	ALUMINUM	X-LARGE	84"	DIRECT DRIVE	ROLL-UP	NA	42 LBS.	40X80X129	12 X 8 X 85
DUAL RECOIL MAX-RG	X-602	COIL-SPRINGS	ALUMINUM	X-LARGE	60"	DIRECT DRIVE	RIGID	NA	44 LBS.	40X80X129	12 X 8 X 85
DUAL RECOIL MAX-RU/RG	X-603	COIL-SPRINGS	ALUMINUM	X-LARGE	60" - 84"	DIRECT DRIVE	2 RIGID / 1 ROLL-UP	NA	45 LBS.	40X80X129	12 X 8 X 85

**APEX
SUMMIT**



THE NEXT GENERATION OF SIGN STANDS

- MASH TESTED
- MADE IN THE USA
- DIRECT DRIVE DURABILITY
- FIELD TESTED & PROVEN RELIABLE IN 1000'S OF WORK ZONES
- DUAL LEAF SPRING WIND DEFLECTION

FEATURES

Apex summit is designed to display rigid signs 14" - 6' above grade, roll-ups 14" - 10' above grade.

Dual fiberglass leaf-springs provide industry-best lateral stability and wind-deflection.

Aluminum (.100" wall) legs and telescoping half-mast offer maximum resistance to rust and corrosion and are light weight. The 2 position base offers stability on uneven terrain and road shoulders.

Standard with direct-drive leg release system, for rigid/roll-up signs.

Comes standard with 3-flag holder.

Mash 2016 tested approved for these substrates: aluminum, roll-ups, aluminum composite material.



APEX SUMMIT TECHNICAL DATA

MASH TESTED

MAX HEIGHT

MODEL	COMPARABLE WITH PREVIOUS MODEL	WIND DEFLECTION SYSTEM	MATERIAL STAND LEGS AND MAST	LEG LENGTH	HEIGHT ABOVE ROAD W/48" SIGN	LEG-RELEASE SYSTEM (BUILT-IN)	SIGN HOLDERS	SIGN ATTACHMENT	WEIGHT (WITHOUT SIGN OR FLAGS)	OPEN SIZE W" X L" X H"	STORAGE SIZE W" X L" X H"
SUMMIT-RU	X-841	DUAL LEAFSPRINGS	ALUMINUM	X-LARGE	14"-120"	DIRECT-DRIVE	ROLL-UP	NA	41 LBS.	48 X 149 X 150	10 X 11 X 81
SUMMIT-RG	X-842	DUAL LEAFSPRINGS	ALUMINUM	X-LARGE	14"-84"	DIRECT-DRIVE	RIGID	NA	44 LBS.	48 X 149 X 150	10 X 11 X 81
SUMMIT-RU/RG	X-843	DUAL LEAFSPRINGS	ALUMINUM	X-LARGE	14"-72" RIGID AND 14" TO 120 ROLL-UP	DIRECT-DRIVE	ROLL UP & RIGID	NA	45 LBS.	48 X 149 X 150	10 X 11 X 81

**APEX
TRIPOD**



THE NEXT GENERATION OF SIGN STANDS

- MASH TESTED
- MADE IN THE USA
- DIRECT DRIVE DURABILITY
- FIELD TESTED & PROVEN RELIABLE IN 1000'S OF WORK ZONES

FEATURES

Simple, durable tri-pod design, economical price, and ease-of-use provide outstanding value.

Heavy duty steel tube construction ensures durability and long term performance.

Steel legs and telescoping mast are galvanized for maximum resistance to rust and corrosion.

Apex tripod includes two rigid sign holders with an optional roll-up holder.

Apex tripod is MASH 2016 compliant for approved for these substrates:

- ABS plastic (to 1/4")
- Plywood (to 5/8"),
- Aluminum (to .125")
- Corrugated Plastics



APEX TRIPOD TECHNICAL DATA

MASH TESTED

ECONO STAND

MODEL	COMPARABLE WITH PREVIOUS MODEL	BALLAST HOOK (BACK-LEG)	MATERIAL STAND LEGS AND MAST	LEGS	HEIGHT ABOVE ROAD W/48" SIGN	LEG-RELEASE SYSTEM (BUILT-IN)	SIGN HOLDERS	SIGN ATTACHMENT	WEIGHT (WITHOUT SIGN OR FLAGS)	OPEN SIZE W" X L" X H"	STORAGE SIZE W" X L" X H"
APEX-TRI	E-352	INCLUDED	GALV. STEEL	FIXED	14"	FOLDING	RIGID HOLDERS	NA	17.8 LBS.	49 X 30 X 76	4 X 5 X 55.5
APEX-TRI-RU	E-353	INCLUDED	GALV. STEEL	FIXED	14"	FOLDING	ROLL-UP & RIGID	NA	18 LBS.	49 X 30 X 76	4 X 5 X 55.5

APEX COMPACT TECHNICAL DATA

MASH TESTED

COMPACT

MODEL	COMPARABLE W/ PREVIOUS MODEL	WIND DEFLECTION SYSTEM	MATERIAL	LEG LENGTH *1	HEIGHT ABOVE ROAD W/48" SIGN	LEG-RELEASE SYSTEM (BUILT-IN)	SIGN HOLDERS	SIGN ATTACHMENT	WEIGHT (W/OUT SIGN OR FLAGS)	OPEN SIZE W" X L" X H"	STORAGE SIZE W" X L" X H"
APEX	C-101 / 102	NA	GALV. STEEL	SHORT	13"	DIRECT DRIVE	NA	SPIN HANDLE	20 LBS.	41 X 68 X 79	9 X 9 X 24
APEX-LT	C-101 / 102	NA	GAL. STEEL	SHORT	13"	DIRECT DRIVE	NA	LATCH-STYLE	20 LBS.	41 X 68 X 79	9 X 9 X 24
APEX-ALS	C-601	NA	ALUMINUM	SHORT	13"	DIRECT DRIVE	NA	SPIN HANDLE	16 LBS.	41 X 68 X 79	9 X 9 X 24
APEX-ALS-LT	C-601	NA	ALUMINUM	SHORT	13"	DIRECT DRIVE	NA	LATCH-STYLE	16 LBS.	41 X 68 X 79	9 X 9 X 24
APEX-AL-LT	C-601	NA	ALUMINUM	LONG	16.5"	DIRECT DRIVE	NA	LATCH-STYLE	19.25 LBS.	41 X 68 X 79	9 X 9 X 24
APEX-AL-L	C-601	NA	ALUMINUM	LONG	16.5"	DIRECT DRIVE	NA	SPIN HANDLE	19.25 LBS.	41 X 68 X 79	9 X 9 X 24

APEX FLEX TECHNICAL DATA

MASH TESTED

COMPACT

MODEL	COMPARABLE WITH PREVIOUS MODEL	WIND DEFLECTION SYSTEM	MATERIAL (STAND LEGS & FULL-MAST)	LEG LENGTH *1	HEIGHT ABOVE ROAD W/48" SIGN	LEG-RELEASE SYSTEM (BUILT-IN)	SIGN HOLDERS	SIGN ATTACHMENT	WEIGHT (WITHOUT SIGN OR FLAGS)	OPEN SIZE W" X L" X H"	STORAGE SIZE W" X L" X H"
APEX FLEX	C-202	LEAF-SPRING	GALV. STEEL	SHORT	23"	DIRECT DRIVE	NA	SPIN-HANDLE	20 LBS.	43 X 68 X 89	8 X 9 X 24
APEX FLEX AL	C-902	LEAF-SPRING	ALUMINUM	LONG	23"	DIRECT DRIVE	NA	SPIN-HANDLE	20 LBS.	43 X 68 X 89	8 X 9 X 24

APEX RECOIL TECHNICAL DATA

MASH TESTED

COMPACT

MODEL	COMPARABLE WITH PREVIOUS MODEL	WIND DEFLECTION SYSTEM	MATERIAL (STAND LEGS & FULL-MAST)	LEG LENGTH	HEIGHT ABOVE ROAD W/48" SIGN	LEG-RELEASE SYSTEM (BUILT-IN)	SIGN HOLDERS	SIGN ATTACHMENT	WEIGHT (WITHOUT SIGN OR FLAGS)	OPEN SIZE W" X L" X H"	STORAGE SIZE W" X L" X H"
RECOIL	C-801	COIL-FLEX	ALUMINUM	LONG	14"	DIRECT DRIVE	NA	SPIN-HANDLE	22 LBS.	53 X 89 X 80	8 X 9 X 24
RECOIL-LT	C-801	COIL-FLEX	ALUMINUM	LONG	14"	DIRECT DRIVE	NA	LATCH BRACKET	22 LBS.	53 X 89 X 80	8 X 9 X 24
RECOIL-ST	C-301	COIL-FLEX	GALV. STEEL	SHORT	14"	DIRECT DRIVE	NA	SPIN-HANDLE	22 LBS.	53 X 89 X 80	8 X 9 X 24
RECOIL-STLT	C-301	COIL-FLEX	GALV. STEEL	SHORT	14"	DIRECT DRIVE	NA	LATCH BRACKET	22 LBS.	53 X 89 X 80	8 X 9 X 24

APEX DUAL RECOIL TECHNICAL DATA

MASH TESTED

MID LEVEL

MODEL	COMPARABLE WITH PREVIOUS MODEL	WIND DEFLECTION SYSTEM	MATERIAL (STAND LEGS & FULL-MAST)	LEG LENGTH	HEIGHT ABOVE ROAD W/48" SIGN	LEG-RELEASE SYSTEM (BUILT-IN)	SIGN HOLDERS	SIGN ATTACHMENT	WEIGHT (WITHOUT SIGN OR FLAGS)	OPEN SIZE W" X L" X H"	STORAGE SIZE W" X L" X H"
DUAL RECOIL -RU	X-551	DUAL COIL	GALV. STEEL	LONG	60"	DIRECT DRIVE	1 ROLL-UP	NA	39 LBS.	34 X 84 X 84	12 X 8 X 63
DUAL RECOIL-RG	X-552	DUAL COIL	GALV. STEEL	LONG	18"	DIRECT DRIVE	2 RIGID	NA	41 LBS.	34 X 84 X 84	12 X 8 X 63
DUAL RECOIL-RU-RG	X-553	DUAL COIL	GALV. STEEL	LONG	18"-60"	DIRECT DRIVE	2 RIGID/1 ROLL-UP	NA	41.5 LBS.	34 X 84 X 84	12 X 8 X 63

APEX DUAL RECOIL MAX TECHNICAL DATA

MASH TESTED

MID LEVEL

MODEL	COMPARABLE WITH PREVIOUS MODEL	WIND DEFLECTION SYSTEM	MATERIAL (STAND LEGS & FULL-MAST)	LEG LENGTH	HEIGHT ABOVE ROAD W/48" SIGN	LEG-RELEASE SYSTEM (BUILT-IN)	SIGN HOLDERS	SIGN ATTACHMENT	WEIGHT (WITHOUT SIGN OR FLAGS)	OPEN SIZE W" X L" X H"	STORAGE SIZE W" X L" X H"
DUAL RECOIL MAX-RU	X-601	COIL-SPRINGS	ALUMINUM	X-LARGE	84"	DIRECT DRIVE	ROLL-UP	NA	42 LBS.	40 X 80 X 129	12 X 8 X 85
DUAL RECOIL MAX-RG	X-602	COIL-SPRINGS	ALUMINUM	X-LARGE	60"	DIRECT DRIVE	RIGID	NA	44 LBS.	40 X 80 X 129	12 X 8 X 85
DUAL RECOIL MAX-RU/RG	X-603	COIL-SPRINGS	ALUMINUM	X-LARGE	60"-84"	DIRECT DRIVE	2 RIGID/1 ROLL-UP	NA	45 LBS.	40 X 80 X 129	12 X 8 X 85

APEX SUMMIT TECHNICAL DATA

MASH TESTED

MAX HEIGHT

MODEL	COMPARABLE WITH PREVIOUS MODEL	WIND DEFLECTION SYSTEM	MATERIAL STAND LEGS AND MAST	LEG LENGTH	HEIGHT ABOVE ROAD W/48" SIGN	LEG-RELEASE SYSTEM (BUILT-IN)	SIGN HOLDERS	SIGN ATTACHMENT	WEIGHT (WITHOUT SIGN OR FLAGS)	OPEN SIZE W" X L" X H"	STORAGE SIZE W" X L" X H"
SUMMIT-RU	X-841	DUAL LEAF SPRINGS	ALUMINUM	X-LARGE	14"-120"	DIRECT-DRIVE	ROLL-UP	NA	41 LBS.	48 X 149 X 150	10 X 11 X 81
SUMMIT-RG	X-842	DUAL LEAF SPRINGS	ALUMINUM	X-LARGE	14"-84"	DIRECT-DRIVE	RIGID	NA	44 LBS.	48 X 149 X 150	10 X 11 X 81
SUMMIT-RU/RG	X-843	DUAL LEAF SPRINGS	ALUMINUM	X-LARGE	14"-72" RIGID AND 14" TO 120 ROLL-UP	DIRECT-DRIVE	ROLL UP & RIGID	NA	45 LBS.	48 X 149 X 150	10 X 11 X 81

APEX TRIPOD TECHNICAL DATA

MASH TESTED

ECONO STAND

MODEL	COMPARABLE WITH PREVIOUS MODEL	BALLAST HOOK (BACK-LEG)	MATERIAL STAND LEGS AND MAST	LEGS	HEIGHT ABOVE ROAD W/48" SIGN	LEG-RELEASE SYSTEM (BUILT-IN)	SIGN HOLDERS	SIGN ATTACHMENT	WEIGHT (WITHOUT SIGN OR FLAGS)	OPEN SIZE W" X L" X H"	STORAGE SIZE W" X L" X H"
APEX-TRI	E-352	INCLUDED	GALV. STEEL	FIXED	14"	FOLDING	RIGID HOLDERS	NA	17.8 LBS.	49 X 30 X 76	4 X 5 X 55.5
APEX-TRI-RU	E-353	INCLUDED	GALV. STEEL	FIXED	14"	FOLDING	ROLL-UP & RIGID	NA	18 LBS.	49 X 30 X 76	4 X 5 X 55.5