



607.562.8463
WWW.SIGNSSAFETY.COM

OHIO DOT
APPROVED VENDOR
PRODUCT BOOKLET
CONTRACT
#019-23



CORPORATE OFFICE
1400 SULLIVAN
STREET ELMIRA, NY
14901



SIGNS AND SAFETY EQUIPMENT, INC.
607.562.8463



WWW.SIGNSSAFETY.COM



STANDARD ROLL-UP SIGN LEGENDS

COMMONLY REQUESTED STANDARD LEGENDS LISTED

MANY OTHER LEGENDS AVAILABLE | CUSTOM LEGENDS ALSO AVAILABLE

48"

ACCIDENT AHEAD
BE PREPARED TO STOP
BLASTING TURN OFF 2-WAY RADIO
BLASTING ZONE AHEAD
BRIDGE WORK AHEAD
CONSTRUCTION AHEAD
DETOUR AHEAD
Dual Lane Transition (SYMBOL)
END CONSTRUCTION
END MOWING
END ROAD WORK
END SURVEY WORK
END UTILITY WORK
FLAGGER AHEAD
Flagger (SYMBOL)
FLAGMAN AHEAD
KEEP RIGHT
LANE CLOSED
LANE CLOSED AHEAD
LANE ENDS MERGE LEFT
LEFT LANE CLOSED
LEFT LANE CLOSED AHEAD
Left Lane Reduction (SYMBOL)
MEN WORKING
Men Working (SYMBOL)
MOWING AHEAD
MOWING NEXT 5 MILES
NO SHOULDER
ONE LANE CLOSED
ONE LANE CLOSED AHEAD
ONE LANE ROAD AHEAD
PREPARE TO STOP
REDUCE SPEED
RIGHT LANE CLOSED
RIGHT LANE CLOSED AHEAD
Right Lane Reduction (SYMBOL)
ROAD CLOSED
ROAD CONSTRUCTION AHEAD
ROAD WORK 1/2 MILE
ROAD WORK AHEAD
SHOULDER WORK
SHOULDER WORK AHEAD
SIGNAL WORK AHEAD
SINGLE LANE AHEAD
SLOW

SURVEY CREW
SURVEY CREW AHEAD
UTILITY CONSTRUCTION
UTILITY CONSTRUCTION AHEAD
UTILITY WORK AHEAD
WORK AREA AHEAD
Worker (SYMBOL)
WORKERS AHEAD

36"

BE PREPARED TO STOP
BLASTING TURN OFF 2-WAY RADIO
BLASTING ZONE AHEAD
CONSTRUCTION ZONE AHEAD
DETOUR
DETOUR AHEAD
ELECTRIC UTILITY WORKERS AHEAD
END BLASTING ZONE
END UTILITY WORK
FLAGGER AHEAD
Flagger (SYMBOL)
FLAGMEN AHEAD
FRESH OIL
LEFT LANE CLOSED
LEFT LANE CLOSED AHEAD
LITTER CREW AHEAD
MEN WORKING
Men Working (SYMBOL)
MEN WORKING AHEAD
MOWING AHEAD
MOWING NEXT 5 MILES
ONE LANE CLOSED AHEAD
ONE LANE ROAD AHEAD
REDUCE SPEED
RIGHT LANE CLOSED
RIGHT LANE CLOSED AHEAD
ROAD CLOSED
ROAD CLOSED AHEAD
ROAD CONSTRUCTION AHEAD
ROAD WORK AHEAD
SINGLE LANE AHEAD
SOBRIETY CHECKPOINT AHEAD
SURVEY CREW
SURVEY CREW AHEAD
SURVEYORS ON PAVEMENT

TELEPHONE WORKERS AHEAD
TRUCKS ENTERING HIGHWAY
UTILITY CONSTRUCTION AHEAD
UTILITY WORK 2000 FT
UTILITY WORK 500 FT
UTILITY WORK AHEAD
WORK AREA AHEAD
Worker (SYMBOL)
WORKERS AHEAD

48" X 24"

END CONSTRUCTION
END ROAD WORK
END SURVEY WORK
END UTILITY WORK
Single Arrow (SYMBOL)

OVERLAY

(for 48" AND 36")

1 MILE
1/2 MILE
1000 FT
1500 FT
250 FT
500 FT
Arrow (SYMBOL)
CENTER
Dual Lane Transition (SYMBOL)
LEFT
RIGHT
ROAD
SHOULDER
ADD TO ROLL-UP SIGN PART #
0L1 FOR 1 OVERLAY PROVISION
0L2 FOR 2 OVERLAY PROVISIONS



OHIO DOT APPROVED VENDOR
CONTRACT #019-23

ROLL-UP SIGNS

ITEM #	SIGN SIZE	SIGN COLOR	SIGN CHARACTERISTICS	PART NUMBER	SHEETING MANUFACTURER BRAND NAME (ASTM D 4956 Type VI)	UNIT	UNIT BID
4-01	36"x36"	Fluorescent Orange	Sign with (2)Lexan Pockets & Ribs	36DGR-MS	3M Diamond Grade Series RS-24	EACH	58.08
4-04	36"x36"	Fluorescent Orange			3M Diamond Grade Series RS-64I	EACH	
4-05	36"x36"	Fluorescent Orange	Sign with (2)Lexan Pockets & Ribs	36MAR-MS	Orafol Oralite Marathon	EACH	55.81
4-06	36"x36"	Fluorescent Pink	Sign with (2)Lexan Pockets & Ribs	36SBC-MS	Orafol Oralite Super Bright	EACH	47.9
4-07	36"x36"	Orange	Sign with (2)Lexan Pockets & Ribs	36SBR-MS	Orafol Oralite Super Bright	EACH	45.61
4-08	36"x36"	Fluorescent Orange			Avery Dennison WU-7014	EACH	
4-09	36"x36"	Multi-colored Sign Fluorescent Orange	Sign with (2)Lexan Pockets & Ribs	36DGR/W-MS	3M Diamond Grade Series RS-24	EACH	81.23
4-10	36"x36"	Multi-colored Sign Fluorescent Orange			3M Diamond Grade Series RS-64I	EACH	
4-11	36"x36"	Multi-colored Sign Fluorescent Orange	Sign with (2)Lexan Pockets & Ribs	36MAR/W-MS	Orafol Oralite Marathon	EACH	80.59
4-12	36"x36"	Multi-colored Sign Fluorescent Pink	Sign with (2)Lexan Pockets & Ribs	36SBC/W-MS	Orafol Oralite Super Bright	EACH	69.11
4-13	36"x36"	Multi-colored Sign Orange background	Sign with (2)Lexan Pockets & Ribs	36SBR/W-MS	Orafol Oralite Super Bright	EACH	69.11
4-14	36"x36"	Multi-colored Sign Fluorescent Orange			Avery Dennison WU-7014	EACH	
4-15	Overlay 36"x36"	Fluorescent Orange	Overlay Panel with Loop Velcro	OL-36DGR	3M Diamond Grade Series RS-24	EACH	16.73
4-16	Overlay 36"x36"	Fluorescent Orange			3M Diamond Grade Series RS-64I	EACH	
4-17	Overlay 36"x36"	Fluorescent Orange	Overlay Panel with Loop Velcro	OL-36MAR	Orafol Oralite Marathon	EACH	15
4-18	Overlay 36"x36"	Fluorescent Pink	Overlay Panel with Loop Velcro	OL-36SBC	Orafol Oralite Super Bright	EACH	12.13
4-19	Overlay 36"x36"	Orange	Overlay Panel with Loop Velcro	OL-36SBR	Orafol Oralite Super Bright	EACH	13.1
4-20	Overlay 36"x36"	Fluorescent Orange			Avery Dennison WU-7014	EACH	
4-21	48"x48"	Fluorescent Orange	Sign with (2)Lexan Pockets & Ribs	48DGR-MS	3M Diamond Grade Series RS-24	EACH	92.87
4-22	48"x48"	Fluorescent Orange			3M Diamond Grade Series RS-64I	EACH	
4-23	48"x48"	Fluorescent Orange	Sign with (2)Lexan Pockets & Ribs	48MAR-MS	Orafol Oralite Marathon	EACH	92.74
4-24	48"x48"	Fluorescent Pink	Sign with (2)Lexan Pockets & Ribs	48SBC-MS	Orafol Oralite Super Bright	EACH	72.17
4-25	48"x48"	Orange	Sign with (2)Lexan Pockets & Ribs	48SBR-MS	Orafol Oralite Super Bright	EACH	72.91
4-26	48"x48"	Fluorescent Orange			Avery Dennison WU-7014	EACH	
4-27	48"x48"	Multi-colored Sign Fluorescent Orange	Sign with (2)Lexan Pockets & Ribs	48DGR/W-MS	3M Diamond Grade Series RS-24	EACH	148.24
4-28	48"x48"	Multi-colored Sign Fluorescent Orange			3M Diamond Grade Series RS-64I	EACH	
4-29	48"x48"	Multi-colored Sign Fluorescent Orange	Sign with (2)Lexan Pockets & Ribs	48MAR/W-MS	Orafol Oralite Marathon	EACH	146.89
4-30	48"x48"	Multi-colored Sign Fluorescent Pink	Sign with (2)Lexan Pockets & Ribs	48SBC/W-MS	Orafol Oralite Super Bright	EACH	101.87
4-31	48"x48"	Multi-colored Sign Orange background	Sign with (2)Lexan Pockets & Ribs	48SBR/W-MS	Orafol Oralite Super Bright	EACH	101.87
4-32	48"x48"	Multi-colored Sign Fluorescent Orange			Avery Dennison WU-7014	EACH	

ADD TO ROLL-UP PART # ABOVE: "OL1" FOR 1 OVERLAY PROVISION / "OL2" FOR 2 OVERLAY PROVISIONS.



OHIO DOT APPROVED VENDOR
CONTRACT #019-23

ROLL-UP SIGNS

ITEM #	SIGN SIZE	SIGN COLOR	SIGN CHARACTERISTICS	PART NUMBER	SHEETING MANUFACTURER BRAND NAME (ASTM D 4956 Type VI)	UNIT	UNIT BID
4-33	Overlay 48" x 48"	Fluorescent Orange	Overlay Panel with Loop Velcro	OL-48DGR	3M Diamond Grade Series RS-24	EACH	16.84
4-34	Overlay 48" x 48"	Fluorescent Orange			3M Diamond Grade Series RS-64I	EACH	
4-35	Overlay 48" x 48"	Fluorescent Orange	Overlay Panel with Loop Velcro	OL-48MAR	Orafol Oralite Marathon	EACH	16.58
4-36	Overlay 48" x 48"	Fluorescent Pink	Overlay Panel with Loop Velcro	OL-48SBC	Orafol Oralite Super Bright	EACH	14.46
4-37	Overlay 48" x 48"	Orange	Overlay Panel with Loop Velcro	OL-48SBR	Orafol Oralite Super Bright	EACH	12.92
4-38	Overlay 48" x 48"	Fluorescent Orange			Avery Dennison WU-7014	EACH	
4-39	24" x 48"	Fluorescent Orange	Sign with (2)Lexan Pockets & Ribs	2448DGR	3M Diamond Grade Series RS-24	EACH	56.66
4-40	24" x 48"	Fluorescent Orange			3M Diamond Grade Series RS-64I	EACH	
4-41	24" x 48"	Fluorescent Orange	Sign with (2)Lexan Pockets & Ribs	2448MAR	Orafol Oralite Marathon	EACH	53.45
4-42	24" x 48"	Fluorescent Pink	Sign with (2)Lexan Pockets & Ribs	2448SBC	Orafol Oralite Super Bright	EACH	43.38
4-43	24" x 48"	Orange	Sign with (2)Lexan Pockets & Ribs	2448SBR	Orafol Oralite Super Bright	EACH	42
4-44	24" x 48"	Fluorescent Orange			Avery Dennison WU-7014	EACH	
4-45	48" x 30"	Fluorescent Orange	Sign with (2)Lexan Pockets & Ribs	4830DGR	3M Diamond Grade Series RS-24	EACH	65.4
4-46	48" x 30"	Fluorescent Orange			3M Diamond Grade Series RS-64I	EACH	
4-47	48" x 30"	Fluorescent Orange	Sign with (2)Lexan Pockets & Ribs	4830MAR	Orafol Oralite Marathon	EACH	71.59
4-48	48" x 30"	Fluorescent Pink	Sign with (2)Lexan Pockets & Ribs	4830SBC	Orafol Oralite Super Bright	EACH	56.35
4-49	48" x 30"	Orange	Sign with (2)Lexan Pockets & Ribs	4830SBR	Orafol Oralite Super Bright	EACH	56.35
4-50	48" x 30"	Fluorescent Orange			Avery Dennison WU-7014	EACH	
4-51	48" x 36"	Fluorescent Orange	Sign with (2)Lexan Pockets & Ribs	4836DGR	3M Diamond Grade Series RS-24	EACH	74.26
4-52	48" x 36"	Fluorescent Orange			3M Diamond Grade Series RS-64I	EACH	
4-53	48" x 36"	Fluorescent Orange	Sign with (2)Lexan Pockets & Ribs	4836MAR	Orafol Oralite Marathon	EACH	72.44
4-54	48" x 36"	Fluorescent Pink	Sign with (2)Lexan Pockets & Ribs	4836SBC	Orafol Oralite Super Bright	EACH	61.36
4-55	48" x 36"	Orange	Sign with (2)Lexan Pockets & Ribs	4836SBR	Orafol Oralite Super Bright	EACH	57.48
4-56	48" x 36"	Fluorescent Orange			Avery Dennison WU-7014	EACH	
4-57	48" x 60"	Fluorescent Orange	Sign with (2)Lexan Pockets & Ribs	4860DGR	3M Diamond Grade Series RS-24	EACH	109.06
4-58	48" x 60"	Fluorescent Orange			3M Diamond Grade Series RS-64I	EACH	
4-59	48" x 60"	Fluorescent Orange	Sign with (2)Lexan Pockets & Ribs	4860MAR	Orafol Oralite Marathon	EACH	127.49
4-60	48" x 60"	Fluorescent Pink	Sign with (2)Lexan Pockets & Ribs	4860SBC	Orafol Oralite Super Bright	EACH	92.08
4-61	48" x 60"	Orange	Sign with (2)Lexan Pockets & Ribs	4860SBR	Orafol Oralite Super Bright	EACH	92.08
4-62	48" x 60"	Fluorescent Orange			Avery Dennison WU-7014	EACH	

ADD TO ROLL-UP PART # ABOVE: "OL1" FOR 1 OVERLAY PROVISION / "OL2" FOR 2 OVERLAY PROVISIONS.

ROLL-UP SIGNS



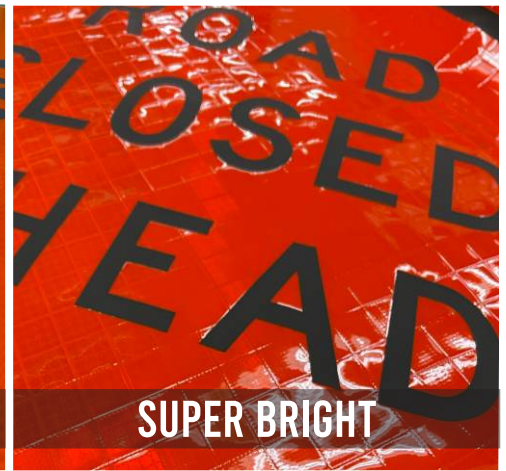
MARATHON ROLL-UPS

- Fluorescence roll-ups take performance to a higher level.
- Longer lasting fluorescent color.
- Outstanding visibility, both day and night.
- Higher levels of photometric performance ensure superior reflectivity at night and in low light conditions.



DIAMOND GRADE

- Diamond Grade optics provide superior brightness and angularity.
- Highly reflective, wide-angle, prismatic material.
- Higher nighttime sign brightness than sheeting that uses glass bead lenses.
- Support smooth traffic response with 24-hour conspicuity and early driver recognition.



SUPER BRIGHT

- Maximum visibility at long distances.
- Super Bright comes in multiple colors.
- Super Bright fluorescent pink color is recommended for Incident Management applications.

BRIGHT

BRIGHTER

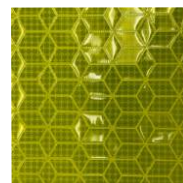
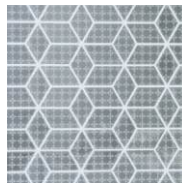
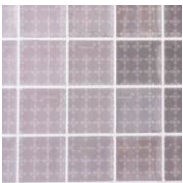
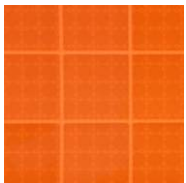
BRIGHTEST

SUPER REFLECTIVE

Super Bright™

Marathon™

Diamond Grade™



Fluorescent
Orange

Fluorescent
White

Fluorescent
Coral Pink

Fluorescent
Orange

Fluorescent
White

Fluorescent
Green

Fluorescent
Orange

Fluorescent
White

SBO RO

SBW

SBP

MARO

MARW

MARFYG

DGO

DGW

**LEFT
OVERLAY PROVISIONS**

- Available in all roll-up sign materials.
- Sewn hook and loop material allow a change to the legend on the sign face.
- Overlays help reduce full-size sign inventory and give your roll-ups signs more versatility in temporary work zones.

POCKET OPTIONS

STANDARD BUILDS ROLL-UPS COME WITH 4 LEXAN POCKETS



FULL-LEXAN



HALF-LEXAN



LOCK-POCKET™



K-POCKET



SEWN POCKET

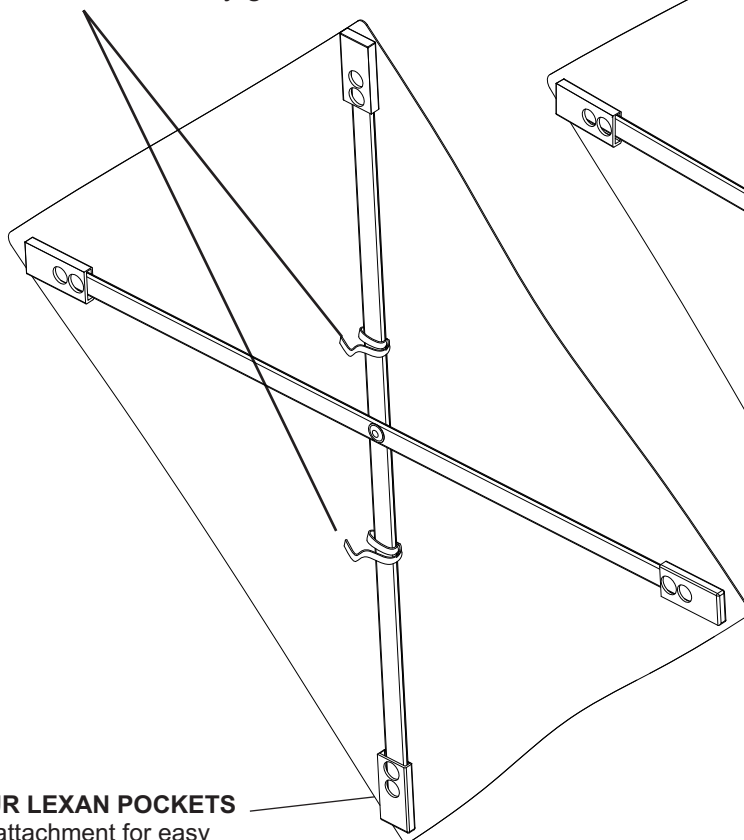
All pocket types are available on Standard Roll-Up Signs. Our signature Lock-Pockets™ slide open and closed to eliminate the need to bend or bow the battens when inserting or removing them from the pocket.

FASTENED VERTICAL RIB

Directly attached rib to roll-up sign face. .

Anti-Kiting

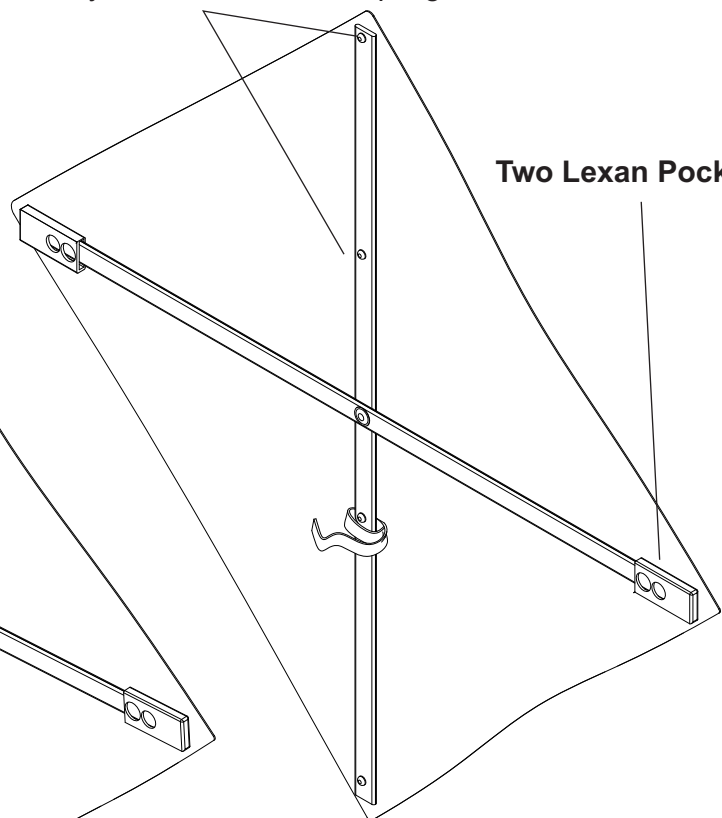
Velcro straps eliminate sail effects when in heavy gust.



FOUR LEXAN POCKETS

Rib attachment for easy placement.

Two Lexan Pockets.





PORTABLE SIGN SUPPORTS

PORTABLE SIGN STANDS - EASY COMPATIBILITY.

The **Apex** Series Sign Stands and Eastern Metal roll-up signs have **easy compatibility** with most any sign and stand in the market, and are **universally interchangeable** with other manufacturer stands.

COMPACT STANDS



APEX



APEX-FLEX



APEX-RECOIL



APEX-TRIPOD

FULL SIZE STANDS



**APEX-DUAL
RECOIL**



**APEX-DUAL
RECOIL MAX**



APEX-SUMMIT

PORTABLE SIGN SUPPORTS

ITEM #	MANU.	DESCRIPTION	MODEL	APPROVED MASH 16 REPORT	UNIT	UNIT BID PRICE
1-21	Eastern Metal	Apex compact sign stand is a non-flexing sign stand constructed of steel and aluminum. Apex compact stand has a half mast a 48" roll-up sign.	Apex	WZ-435	EACH	\$83.11
1-22	Eastern Metal	Apex Dual Recoil mid-size wind deflectable sign stand is constructed of steel and aluminum, with dual coil-flex springs. Apex Dual Recoil mid-size stand has an adjustable ull-mast to hold 48" signs.	Apex Dual Recoil	Calspan MASH BR0044/MASH BR0056	EACH	\$154.50
1-23	Eastern Metal	Apex Dual Recoil Max full-size wind deflectable sign stand is constructed of steel and aluminum with dual coil-flex springs. Apex Dual Recoil full-size stand has an adjustable full-mast to hold 48" signs.	Apex Dual Recoil Max	Calspan MASH BR0045/MASH BR0057	EACH	\$215.92
1-24	Eastern Metal	Apex Flex compact wind deflectable sign stand is constructed of steel and aluminum with an adjustable fiberglass leaf-spring. Apex Flex compact stand has a half-mast to hold a 48" roll-up sign.	Apex Flex	Calspan MASH BR0063/MASH BR0064	EACH	\$118.74
1-25	Eastern Metal	Apex Recoil compact wind deflectable sign stand is constructed of steel and aluminum, with a single coil-flex spring. Apex Recoil compact stand has a half-mast to hold up to a 48" roll-up sign.	Apex Recoil	WZ-436	EACH	\$122.44
1-26	Eastern Metal	Apex Summit full-size wind deflectable sign stand is constructed of steel and aluminum with dual fiberglass leaf-springs. Apex Summit full-size stand has an adjustable full-mast to hold 48" signs.	Apex Summit	Calspan MASH BR0078/MASH BR0079	EACH	\$234.91
1-27	Eastern Metal	Apex Tripod, non wind deflectable sign stand is constructed with steel legs and mast. Apex Tripod stand has an adjustable full-mast to hold 48" signs.	Apex Tripod	Calspan MASH BR0046/MASH BR0079	EACH	\$63.31

PORTABLE SIGN SUPPORTS


MASH TESTED WZ-435A

NON-WIND DEFLECTABLE APEX STANDS ARE ECONOMICAL AND FULFILL THE MOST BASIC COMPACT STAND NEEDS.

- Rugged and reliable deploys quickly, folds small and is economical.
- Telescoping legs adjust for maximum stability on uneven terrain and road shoulders.
- Mechanical pin leg release.
- Roll-Up signs attach to the APEX sign stand with a universal spin-handle.

MODEL	MATERIAL	WT.	OPEN SIZE	STORAGE SIZE	COMPARE	NCHRP 350
APEX	GALV STEEL	20LBS.	41 X 68 X 79	9 X 9 X 24	C-101	WZ-7, 13, 56


MASH TESTED

WIND DEFLECTABLE APEX FLEX WITH ADJUSTABLE FIBERGLASS LEAF-SPRING IS STABLE IN HIGH WIND GUST

- Fiberglass leaf-spring provides optimal wind-deflection and lateral stability in high wind gust.
- Telescoping legs adjust for maximum stability on uneven terrain and road shoulders.
- Mechanical pin leg release.
- Roll-Up signs attach to the APEX FLEX sign stand with a universal spin-handle.

MODEL	MATERIAL	WT.	OPEN SIZE	STORAGE SIZE	COMPARE	NCHRP 350
APEX-FLEX	GALV STEEL	20LBS.	41 x 68 x 89	9 x 9 x 24	C-202	WZ-13, 56


MASH TESTED WZ-436A

WIND DEFLECTABLE APEX RECOIL WITH SINGLE COIL-FLEX SPRING, IS RUGGED, RELIABLE AND DEPLOYS QUICKLY.

- The coil-flex single spring provides wind-deflection and stability in all conditions including high wind gusts.
- Telescoping legs adjust for maximum stability on uneven terrain and road shoulders.
- Mechanical pin leg release.
- Roll-Up signs attach to the APEX RECOIL sign stand with a universal spin-handle.

MODEL	MATERIAL	WT.	OPEN SIZE	STORAGE SIZE	COMPARE	NCHRP 350
APEX-RECOIL	ALUMINUM	22LBS.	53 X 89 X 80	8 X 9 X 24	C-801	WZ-303A


MASH TESTED

NON-WIND DEFLECTABLE APEX TRI-POD STANDS ARE ECONOMICAL AND FULFILL THE MOST BASIC SIGN STAND NEEDS AND DISPLAY A VARIETY OF SIGN SUBSTRATES

- The Apex Tri-Pod stand is a simple durable design, economically priced providing outstanding value.
- The Apex Tri-Pod is constructed of heavy duty steel.
- Adjustable mast can display both rigid and roll-up signs a minimum of 14" above grade.

MODEL	MATERIAL	LEGS	HEIGHT ABOVE ROAD W/48" SIGN	SIGN HOLDERS	WT	OPEN SIZE W X L X H	STORAGE SIZE W X L X H	COMPARE TO	NCHRP 350
APEX-TRI-POD	GALV. STEEL	FIXED	14"	RIGID HOLDERS	17.8LBS.	49 X 30 X 76	4 X 5 X 55.5	E-352	WZ-59



APEX DUAL RECOIL

MASH TESTED

WIND DEFLECTABLE APEX DUAL RECOIL IS A MID-SIZE STAND WITH SIGNATURE ORANGE DUAL COIL-FLEX SPRINGS AND DISPLAYS A VARIETY OF SIGN SUBSTRATES.

- The dual coil-flex springs provide wind-deflection and stability in all conditions including high wind gusts.
- Mechanical pin leg release.
- Telescoping mast elevates rigid signs 18" to 60" above grade and roll-up signs 14" to 84" above grade.
- Legs adjust for maximum stability on uneven terrain and road shoulders.
- Displays any size or shape rigid sign or roll-up sign.

MODEL	MATERIAL	WT	OPEN SIZE	STORAGE SIZE	COMPARE	NCHRP 350
APEX-DUAL-RECOIL	GALV. STEEL	41LBS.	34X84X84	12 X 8 X 63	X-551	WZ-7, 13, 56



APEX DUAL RECOIL MAX

MASH TESTED

WIND DEFLECTABLE APEX DUAL RECOIL MAX IS A FULL-SIZE STAND WITH SIGNATURE ORANGE DUAL COIL-FLEX SPRINGS AND DISPLAYS A VARIETY OF SIGN SUBSTRATES.

- The dual coil-flex springs provide wind-deflection and stability in all conditions including high wind gusts.
- Mechanical pin leg release.
- Telescoping mast displays rigid signs 18" to 84" above grade and roll-up signs 14" to 120" above grade.
- Legs adjust for maximum stability on uneven terrain and road shoulders.
- Displays any size or shape rigid sign or roll-up sign.

MODEL	MATERIAL	WT	OPEN SIZE	STORAGE SIZE	COMPARE	NCHRP 350
APEX-DUAL-RECOIL-MAX	ALUMINUM	42LBS.	40X80X129	12 X 8 X 85	X-601	WZ 13, 56



APEX SUMMIT

MASH TESTED

WIND DEFLECTABLE APEX SUMMIT IS A FULL-SIZE STAND WITH DUAL FIBERGLASS LEAF-SPRINGS AND DISPLAYS A VARIETY OF SIGN SUBSTRATES.

- The dual fiberglass leaf-springs provide wind-deflection and stability in all conditions including high wind gusts.
- Mechanical pin leg release.
- Telescoping mast displays rigid signs 18" to 84" above grade and roll-up signs 14" to 120" above grade.
- Legs adjust for maximum stability on uneven terrain and road shoulders.
- Displays any size or shape rigid sign or roll-up sign.

MODEL	MATERIAL	WT	OPEN SIZE	STORAGE SIZE	COMPARE	NCHRP 350
APEX-SUMMIT	ALUMINUM	41LBS.	48 X 149 X 150	10 X 11 X 81	X-841	WZ-59, 78A

STOP-SLOW PADDLES

ITEM #	SIGN SIZE	DESCRIPTION	SHEETING TYPE	MAST MAT.	MAST HEIGHT (MINIMUM)	UNIT	MANUFACTURER	UNIT BID PRICE
5-03	18" x 18"	FLH-1884-HI	Hi-Intensity Rfl.	PVC	84	EACH	Eastern Metal of Elmira Inc.	48.29
5-08	24" x 24"	FLH-2484-HI	Hi-Intensity Rfl.	PVC	84	EACH	Eastern Metal of Elmira Inc.	56.65

FLAGGER HELPER WORK ZONE PADDLES

WORK ZONE 18" FLAGGER-HELPER

MODEL NO.	HANDLE LENGTH	STAFF LENGTH
FLH-1884	12"	84" STAFF

WORK ZONE 24" FLAGGER-HELPER

MODEL NO.	HANDLE LENGTH	STAFF LENGTH
FLH-2484	12"	84" STAFF



FLAGGER-HELPER™ STOP/SLOW PADDLES

STOP / SLOW faces are available in many reflective combinations. ABS and PVC Staffs are lightweight and come in different lengths to help minimize operator fatigue and increase visibility for operator safety.



DETACHES WITH A SIMPLE BUTTON PRESS